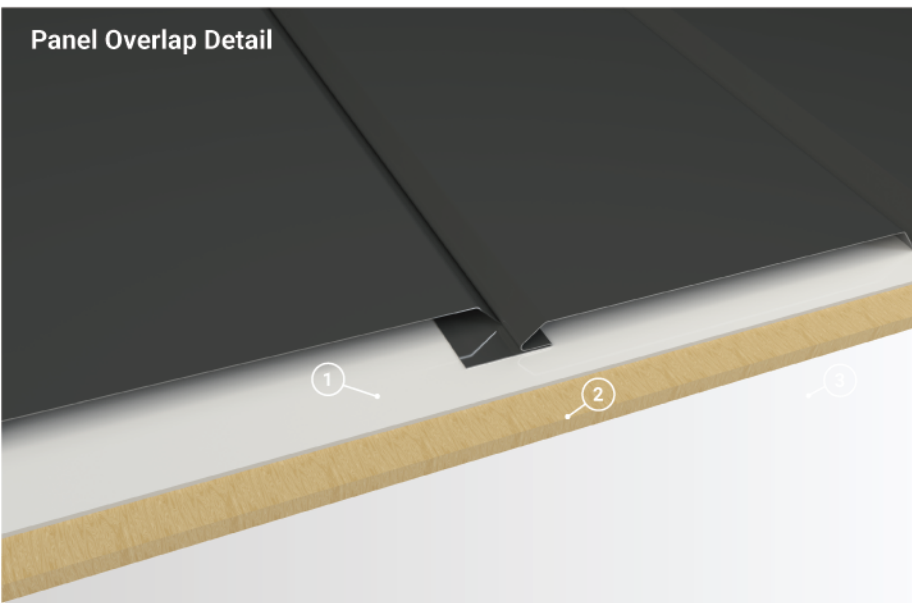


Enlarged Fastener Assembly

Panel Overlap Detail

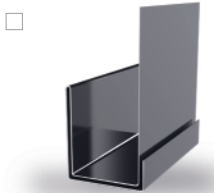


- 1. **Underlayment:** High Temp Ice & Water
- 2. **Substrate:** Plywood substrate material shown

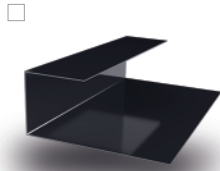
Wall Coverage	12" or 18"
Panel Gauges	24*, 26, 29
Fastener Options	Concealed Clip System
Panel Length	10'
Relief Height	3/8"
Variegated Assembly	Available
Impact Rating	Not Available
Wind Uplift Rating	Not Available
Warranty	Based on Paint System
For more information	1.833.STEEL.US

* Grade 50

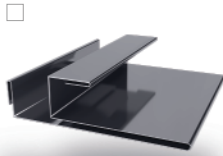
Version 5.3, 1/2022



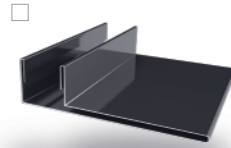
Double J Trim ***



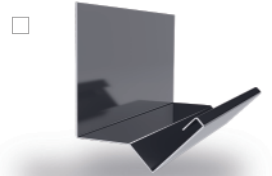
Reverse J Trim *



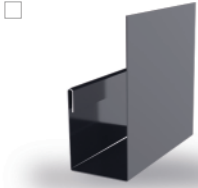
F & J Trim



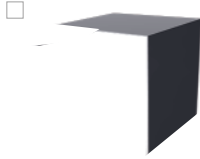
F Trim



Head Trim



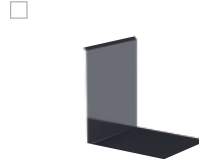
J Trim



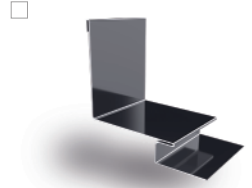
Outside Corner



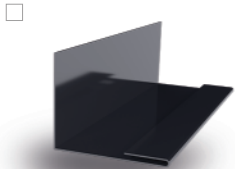
Outside Corner 2



Inside Corner



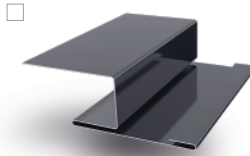
Inside Corner 2



Inside Corner Closure



Fascia



H Trim **

Additional Trim Profiles Available By Request

* Used with Outside & Inside Corner 2 and H Trim

** Used with Reverse J Trim

*** Color On Both Sides

